

Courtney towners Glebelands Avenue Ilford, IG2 7DJ

Edward Chase, the premier estate agent of Ilford is delighted to present to the residential lettings market this amazing 2-bedroom apartment located in Newbury Park, IG2. This property is located opposite Newbury Park Station providing excellent transport links into Central London & Essex. We feel this apartment would be an ideal choice for couples or growing families searching for size, comfort, and convenience. This property has several key features such as: - Large 2 bedroom apartment - Family sized shower room - Elevator in building - Parking available - Gas central heating - Double glazed windows - White goods - Ample storage - Private kitchen space - Large reception room - Entry phone system - Newbury Park Station - Stretched balcony - Part furnished To view this property please contact Edward Chase. Lettings Edward Chase estate agents offer a bespoke, professional, ARLA accredited Lettings & Management service.

- Amazing, Spacious 2 Bedroom Flat Located on Upper Floors
- The Property Is Part Furnished & Includes Kitchen White Goods
- Stretched Balcony, Double Glazed Windows, Gas Central Heating & Combination Boiler
- Building Has A Elevator & Parking Available On Site
- Great Size Apartment with Large Reception, Separate Kitchen & 2 Large Bedrooms
- Ample Storage & Part Furnished

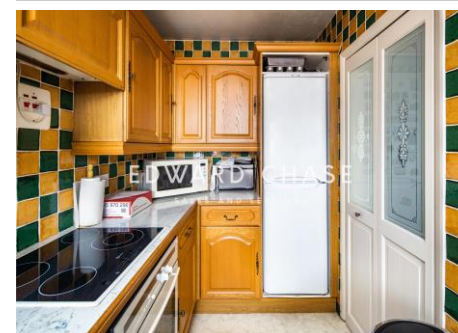
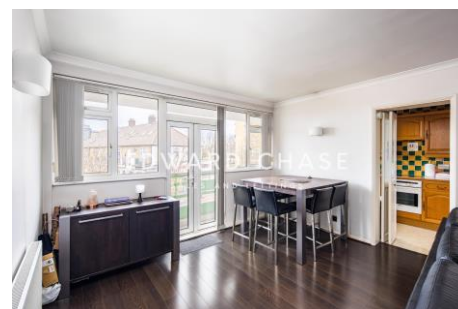
Monthly Rental Of £1,649

Courtney towners Glebelands Avenue Ilford, IG2 7DJ

Monthly Rental Of £1,649

Edward Chase, the premier estate agent of Ilford is delighted to present to the residential lettings market this amazing 2-bedroom apartment located in Newbury Park, IG2. This property is located opposite Newbury Park Station providing excellent transport links into Central London & Essex. We feel this apartment would be an ideal choice for couples or growing families searching for size, comfort, and convenience. This property has several key features such as: - Large 2 bedroom apartment - Family sized shower room - Elevator in building - Parking available - Gas central heating - Double glazed windows - White goods - Ample storage - Private kitchen space - Large reception room - Entry phone system - Newbury Park Station - Stretched balcony - Part furnished To view this property please contact Edward Chase. Lettings Edward Chase estate agents offer a bespoke, professional, ARLA accredited Lettings & Management service. If you would like a free property appraisal to gauge the

rental potential of your property or you are considering a buy to let purchase, please feel free to contact Sukhbir Basra, Branch Manager to arrange an appointment. Edward Chase estate agents specialise in Ilford, Redbridge, Seven Kings, Goodmayes, Chadwell Heath, Newbury Park, Barkingside, Chadwell Heath, Barking, Canary Wharf, Docklands, Romford, Chigwell, Dagenham, Newham, Royal Wharf and the surrounding East London vicinity. Edward chase estates agents Lorimer Village, Goodmayes site. Our enthusiastic team of estate agents in Ilford are the local experts covering the postcodes of IG1, IG2, IG3, IG4, IG5, IG6, IG7 IG8. Our enthusiastic team of estate agents in Canary Wharf are the local experts covering the postcodes E14, E15, E16.



Score	Energy rating	Current	Potential
92+	A		
81-91	B		
69-80	C	73 C	78 C
55-68	D		
39-54	E		
21-38	F		
1-20	G		

MONEY LAUNDERING REGULATIONS 2003

Intending purchasers will be asked to produce identification and proof of financial status when an offer is received. We would ask for your co-operation in order that there will be no delay in agreeing the sale.